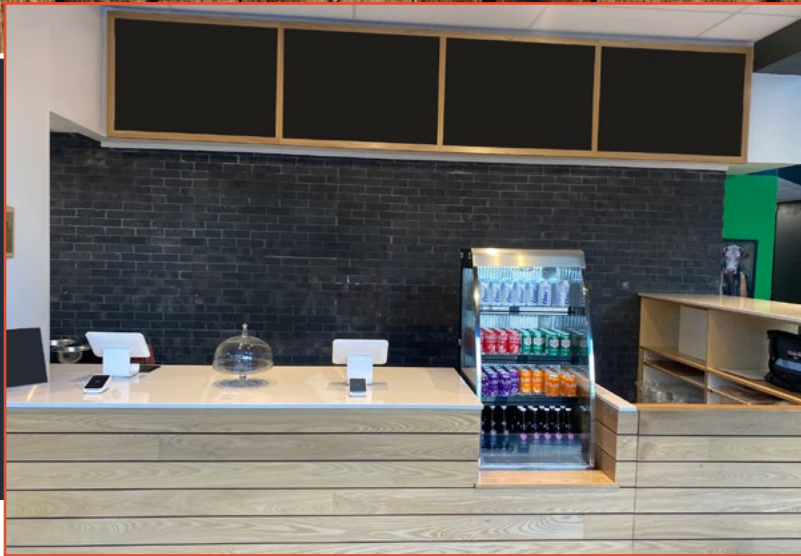


# Right-Sized Unit On The Waterfront Park!



## SET UP FOR SUCCESS

15 Merchants' Wharf M5A 0N8



**ASKING \$225,000**

**Great Location Fronting on  
George Brown Campus, Tons  
of New Condos & Sherbourne  
Common Waterfront Park.**

- 1,253 SQFT
- LLBO FOR 10 INTERIOR
- TOTAL MONTHLY RENT \$7,259.17 (INCLUDES TMI & HST)
- CURRENT LEASE EXPIRES 2031
- 5 YEAR RENEWAL OPTION
- CAN BE DIFFERENT CONCEPT
- LICENSED PATIO FOR 12

PLEASE DO NOT GO DIRECT, PLEASE DO NOT SPEAK TO STAFF, YOUR DISCRETION IS APPRECIATED.  
CONTACT THE LISTING AGENT FOR MORE INFO AND A COMPLETE OFFER PACKAGE.



### CHRISTIAN PETRONIO

DIRECTOR OF HOSPITALITY DIVISION  
& SALES REPRESENTATIVE

T: 647.299.5483

CPetronio@chirealestate.ca

### ORI GRAD

MANAGING DIRECTOR & BROKER

O: 416.953.3052

OriGrad@chirealestate.ca

**CHirealestate.ca**

*Your Trusted Source For Commercial,  
Hospitality & Investment Real Estate*

A Commercial Division of RE/MAX Ultimate Realty Inc. Independently Owned and Operated  
This document is not meant to solicit existing listings. (12.2002).

Although the information has been obtained from sources deemed reliable, members of CHI Real Estate Group make no guarantees as to the accuracy of the information contained herein and offer the Property without express or implied warranties of any kind.