

MARBLE SLAB CREAMERY

SERVING UP HAPPINESS TO CUSTOMERS EVERY DAY

471 Harmony Road North, Unit C0008, Oshawa Ontario

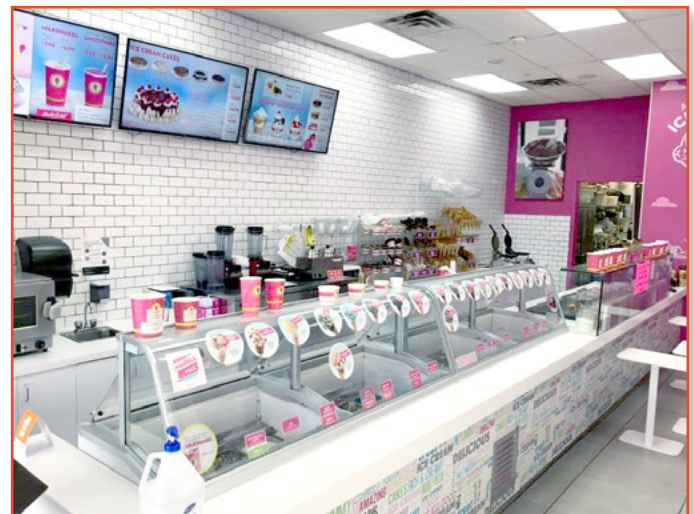


PRICE \$179,000

IMAGINING A CAREER WHERE EVERY CUSTOMER INTERACTION YOU HAVE MAKES SOMEONE'S DAY BETTER? LOOK NO FURTHER THAN JOINING THE MARBLE SLAB CREAMERY FRANCHISE FAMILY. THIS FRANCHISE IS DEEPLY COMMITTED TO CREATING A REWARDING WORKPLACE THAT ENCOURAGES CREATIVITY, ENTHUSIASM, PERSONAL GROWTH, AND FINANCIAL SUCCESS.

- TAKE OVER THIS PROFITABLE FRANCHISE JUST IN TIME FOR PEAK SEASON AND ENJOY A GREAT LIFESTYLE IN RAPIDLY GROWING OSHAWA ONTARIO
- GREAT 1,035 SF LOCATION IN AAA PLAZA SURROUNDED BY GREAT ANCHOR TENANTS - LCBO, HOME DEPOT, MOVIE THEATRE AND OTHER SHOPPING
- HIGHLY PROFITABLE WITH GREAT MARGINS
- BASE RENT IS \$2,760.00 + \$1,753.47 ADD RENT + HST = \$5,100.22
- RECENTLY RENOVATED
- CAN BE RUN HANDS ON OR HANDS OFF WITH TRAINING AVAILABLE

PLEASE DO NOT GO DIRECT, PLEASE DO NOT SPEAK TO STAFF, YOUR DISCRETION IS APPRECIATED. CONTACT THE LISTING AGENT FOR MORE INFO AND A COMPLETE OFFER PACKAGE.



MARK PARMEGIANI

BROKER / DIRECTOR OF COMMERCIAL SALES & LEASING

C: 416.528.2799

markp@chirealestate.ca

ORI GRAD

MANAGING DIRECTOR & BROKER

O: 416.953.3052

OriGrad@chirealestate.ca

CHirealestate.ca

Your Trusted Source For Commercial, Hospitality & Investment Real Estate

A Commercial Division of RE/MAX Ultimate Realty Inc. Independently Owned and Operated
This document is not meant to solicit existing listings. (12.2002).

Although the information has been obtained from sources deemed reliable, members of CHI Real Estate Group make no guarantees as to the accuracy of the information contained herein and offer the Property without express or implied warranties of any kind.