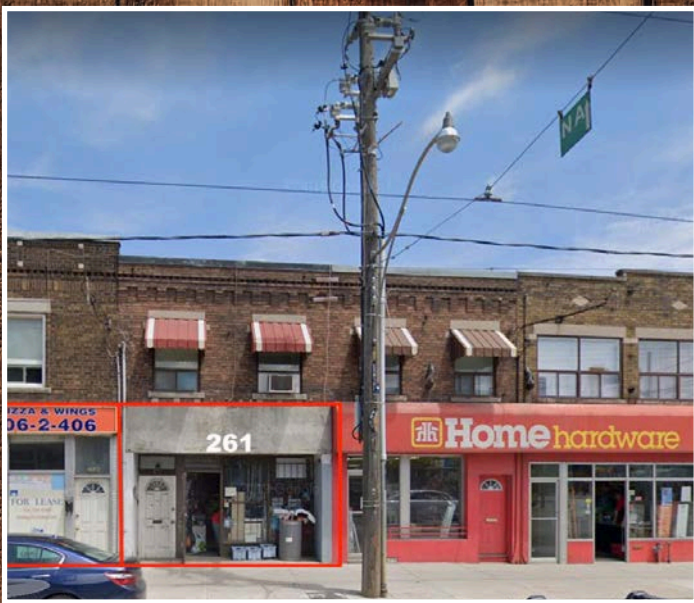


★ **MAKE YOUR MARK** ★
RAPIDLY DEVELOPING GERRARD & COXWELL



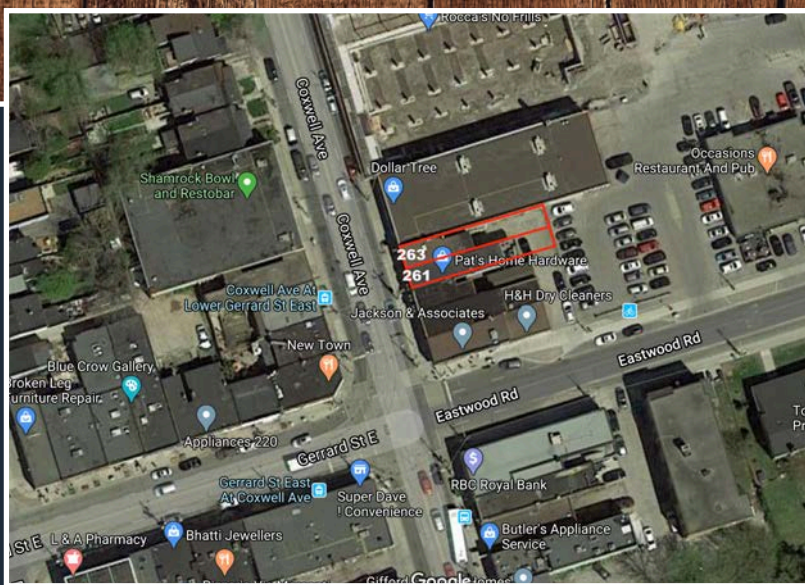
\$33.00 NET LEASE



261 COXWELL AVE, TORONTO ON M4L3B5

BE PART OF SHAPING THIS RAPIDLY DEVELOPING, UP & COMING NEIGHBOURHOOD IN TORONTO - BEFORE RENTS GO UP!

- APPROX. 1,208 SQ FT MAIN FLOOR AND BASEMENT
- THIS LOCATION IS CLOSE TO SEVERAL CHURCHES, A BOWLING ALLEY & SEVERAL PARKS
- LANDLORD IS MAKING SIGNIFICANT INVESTMENT IN THE NEIGHBOURHOOD



PLEASE DO NOT GO DIRECT, PLEASE DO NOT SPEAK TO STAFF, YOUR DISCRETION IS APPRECIATED.
 CONTACT THE LISTING AGENT FOR MORE INFO AND A COMPLETE OFFER PACKAGE.

MARK PARMEGANI

DIRECTOR OF COMMERCIAL SALES & LEASING /
 SALES REPRESENTATIVE
 C: 416.528.2799
 markp@chirealestate.ca

ORI GRAD

MANAGING DIRECTOR & BROKER
 C: 416.953.3052
 OriGrad@chirealestate.ca

CHIrealstate.ca

Your Trusted Source For Commercial, Hospitality & Investment Real Estate