

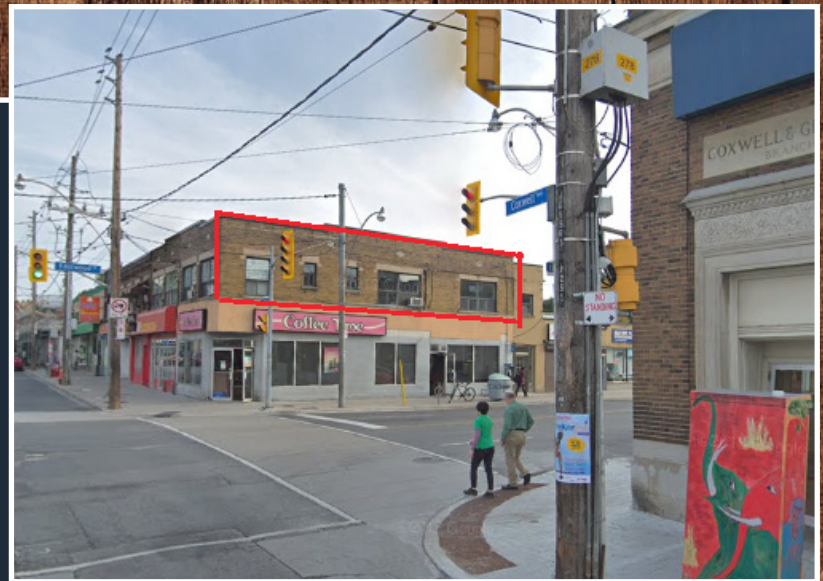
★ **2ND FLOOR OFFICE SPACE** ★
AT THE CORNER OF GERRARD & COXWELL



\$17.00 NET LEASE

255 COXWELL AVE, TORONTO ON M4L3B5

BE PART OF SHAPING THIS RAPIDLY DEVELOPING,
UP & COMING NEIGHBOURHOOD IN TORONTO -
BEFORE RENTS GO UP!



- SEPARATE STREET ENTRANCE & LOTS OF NATURAL LIGHT
- STREET PARKING CLOSE BY
- TERRIFIC SIGNAGE OPPORTUNITY AT THE BUSY INTERSECTION OF GERRARD & COXWELL
- LANDLORD IS MAKING SIGNIFICANT INVESTMENT IN THE NEIGHBOURHOOD

PLEASE DO NOT GO DIRECT, PLEASE DO NOT SPEAK TO STAFF, YOUR DISCRETION IS APPRECIATED.
CONTACT THE LISTING AGENT FOR MORE INFO AND A COMPLETE OFFER PACKAGE.

MARK PARMEGANI

DIRECTOR OF COMMERCIAL SALES &
LEASING /
SALES REPRESENTATIVE
C: 416.528.2799
markp@chirealestate.ca

ORI GRAD

MANAGING DIRECTOR & BROKER
C: 416.953.3052
OriGrad@chirealestate.ca

CHirealestate.ca

*Your Trusted Source For Commercial,
Hospitality & Investment Real Estate*

A Commercial Division of RE/MAX Ultimate Realty Inc. Independently Owned and Operated
This document is not meant to solicit existing listings. (12.2002).