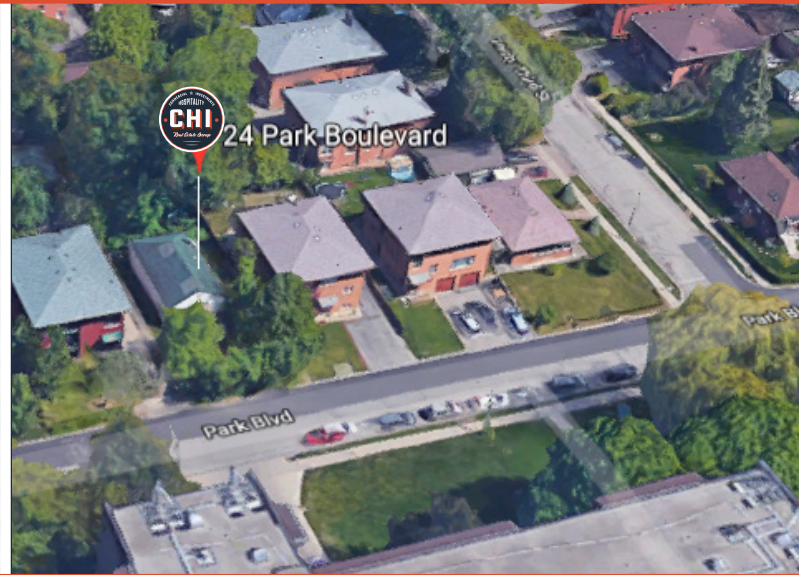
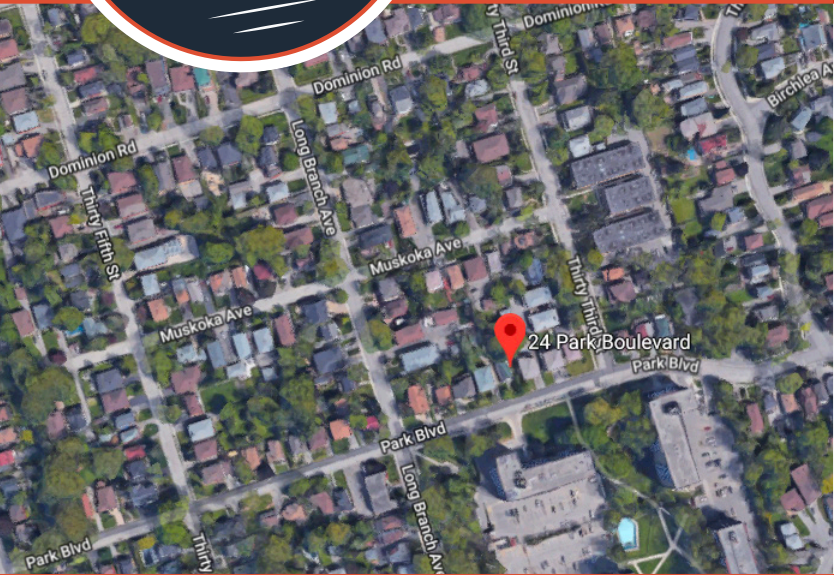




Residential Land For Sale ★ IN LONG BRANCH, ETOBICOKE



24 Park Blvd, Etobicoke, ON M8W 1G7

ATTENTION CONTRACTORS AND BUILDERS

**INCREDIBLE OPPORTUNITY TO REDEVELOP RESIDENTIAL LAND.
PROPERTY BEING SOLD FOR LAND VALUE ONLY!**

**ZONED FOR LARGE SINGLE FAMILY HOME OR MULTIPLEX.
PROPERTY LOCATED STEPS FROM LAKE ONTARIO IN LOVELY LONG BRANCH**

**LAND DETAILS:
FRONTAGE (FT): 46.5
DEPTH (FT): 150
SITE AREA: 6,975 SQ.FEET**

PRICE \$849,000

**PLEASE DO NOT GO DIRECT. YOUR DISCRETION IS APPRECIATED.
CONTACT THE LISTING AGENT FOR MORE INFO AND A COMPLETE OFFER PACKAGE.**

JASON CASTIGLIONE
SALES REPRESENTATIVE
c: 647.308.2738
o: 416-530-1080
JC@chirealestate.ca

ORI GRAD
MANAGING DIRECTOR & BROKER
c: 416.953.3052
OriGrad@chirealestate.ca

CHirealestate.ca
*Your Trusted Source For Commercial,
Hospitality & Investment Real Estate*