

FOR SALE VACANT LAND

★ 193207 Amaranth East Town Line



JASON CASTIGLIONE

SALES REPRESENTATIVE

C: 647.308.2738

O: 416.530.1080

JC@chirealestate.ca

ORI GRAD

MANAGING DIRECTOR & BROKER

C: 416.953.3052

O: 416.530.1080

OriGrad@chirealestate.ca

CHirealestate.ca

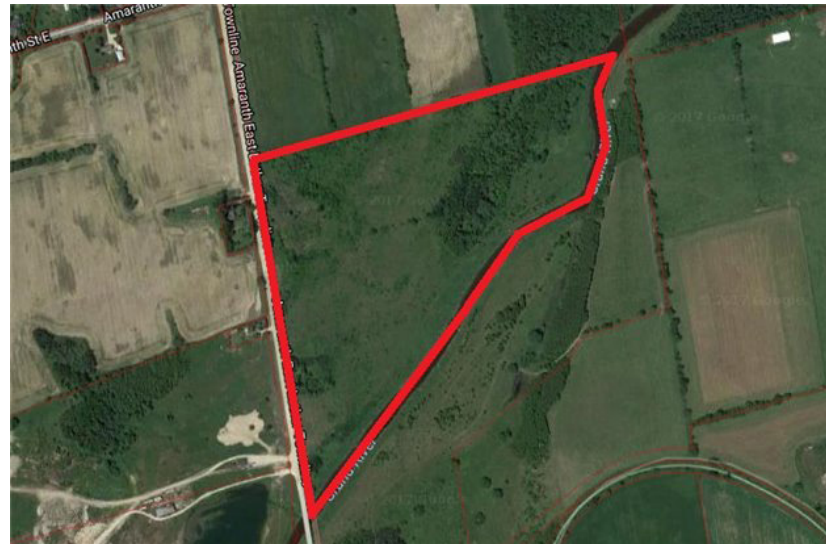
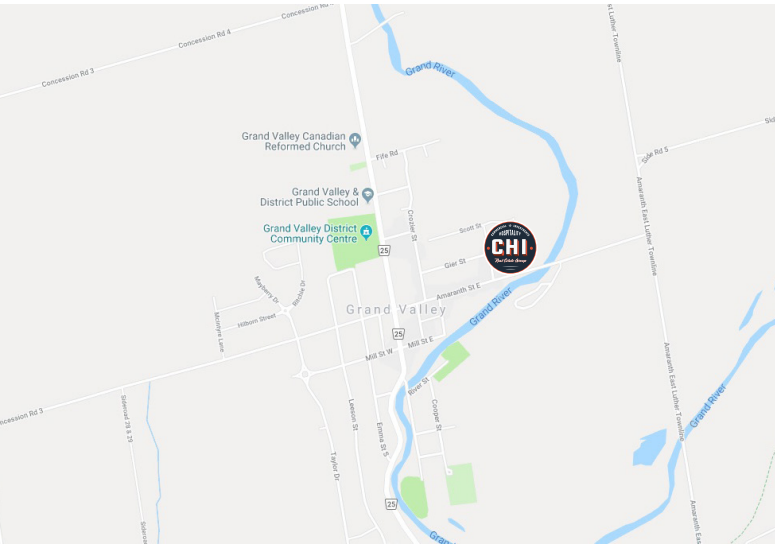
Your Trusted Source For Commercial, Hospitality, Investment Real Estate

A Commercial Division of RE/MAX Ultimate Realty Inc. Independently Owned and Operated

This document is not meant to solicit existing listings. (12.2002).



LOCATION & OTHER INFO



DESCRIPTION

Rare Opportunity To Own A Unique Piece Of The Grand River Just East Of Grand Valley Before It Reaches Belwood Lake. Boasting An Incredible 3000+ Feet Of Frontage On Grand River While Still Having Approximately 13-18 Acres Of Residential Land To Build On. Developing This Property Would Require Permit Application Process With The Conservation Authority And The Township. Approximately 56 Acres Of Land. Grand River Borders The South Side Of The Property. Legal Description: Pt Lt 4 Con 10 As In Mf99870 Except Mf25187; Amaranth.

LAND DETAILS

Pt Lt 4 Con 10 As In Mf99870 Except Mf25187

Fronts On: East

Type: Farm

Style: Other

Lot Size: Approximately 56 Acres

ASKING PRICE : \$849,000